

# FOTILE

## USER'S HANDBOOK

---

Please read this instruction  
manual carefully before using

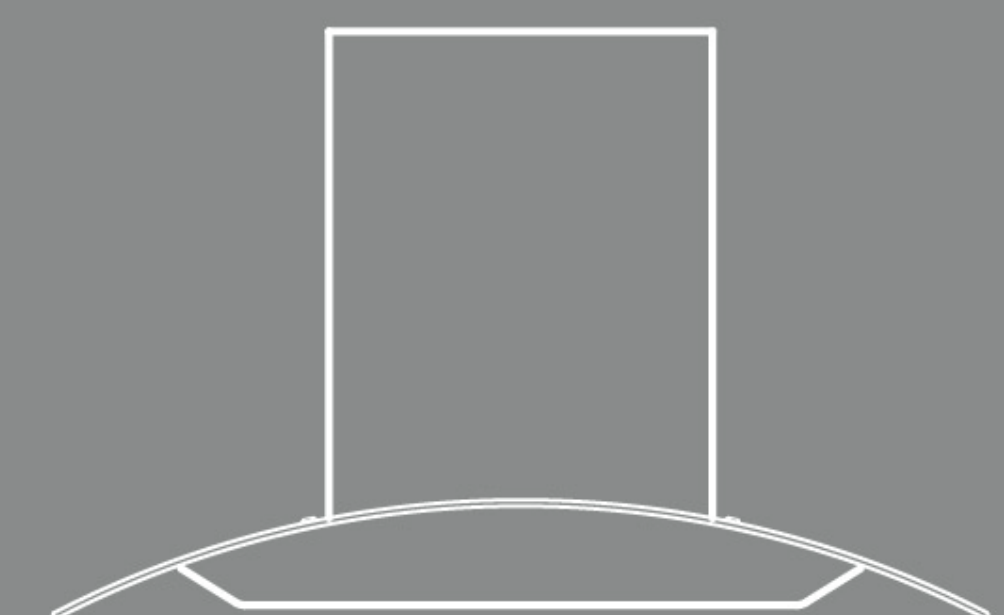
---

## RANGE HOOD

---

EH11D/EH11D(30)/EH11D(24)  
EH13/EH13(30)/EH13(24)

---





Thank you for choosing our products, please read the handbook carefully before using. The information in this handbook is correct at the time of printing. Our company is responsible for revising and updating this handbook. However, we reserve the right to modify and update our products and handbook without notice. This handbook contains sketches, which are to be used as a reference only. Please use common sense if these sketches do not exactly reflect your situation or products.

CONTENTS

CONTENTS ----- 1

Warning and Notice ----- 2

    Environmental Protection ----- 2

    Mechanical Safety ----- 2

    Electrical Safety and Fire Prevention ----- 2

    Danger of Toxic Fumes ----- 4

    Suggestion and Description ----- 4

Package and Product Information ----- 5

    Packing List ----- 5

    Performance Specifications ----- 5

    Product Basic Conditions ----- 6

Installation ----- 6

    The standard assembled size of the culinary wall cupboard  
    and range hood in the kitchen ----- 6

    Installation Steps ----- 7

    Installation Requirements ----- 7

    Installation the Main Frame ----- 8

Operation ----- 8

    EH11D/EH11D(30)/EH11D(24) ----- 9

    EH13/EH13(30)/EH13(24) ----- 9

Cleaning and Maintenance ----- 9

    Metal Filter ----- 9

    Replacing Notes ----- 10

    Metal or Glass Surface ----- 10

    Switch ----- 10

    Change the Light ----- 10

    Identification and Settlements of Common Problems ----- 10

Warning and Notice

- ◇Read and save these instructions
- ◇To avoid any accidental risks or damages to the range hood, please read this user's handbook carefully before initial installation and use.
- ◇ Make sure that the actual voltage and frequency are according with the ones clarified in this User's Manual to avoid any possible damage to the range hood.
- ◇ The range hood is for residential use only.
- ◇ Disconnect the appliance from the power supply before servicing

■ Environmental Protection

1. Packing materials like absorption film, polystyrene and plastics may cause suffocation, so please keep them away from the reach of infants and children.
2. Dispose the packing materials properly.
3. The replaced appliance should be sent to the local reclamation depot or recycling center. Keep children away from those places to ensure their safety. The electric wire of the appliance should be cut off to avoid misuse.

■ Mechanical Safety

1. Please use standard accessories provided by our company to ensure safe installation. (Make sure to use the expansion pipe and expansion bolt provided by our company, in case the range hood falls down accidentally); The hole drilled in the wall should precisely match the size of the expansion pipe, otherwise, the range hood may loose and fall down.
2. The wall should be strong enough to support the range hood. As for hollow wall or hollow plate, the thickness of its solid part should be no less than 30mm. As for concrete wall, the installation can be directly operated. The range hood should be firmly fixed on the wall.
3. When drilling on the roof or ceiling, please make sure not to damage the electric lines as well as any other hidden devices.
4. When moving the range hood for installing, cleaning or repairing, please make sure to wear protective gloves to protect your hands because the edge of the range hood may hurt.
5. The appliance is not intended to use by persons (including children) with reduced physical sensory or mental capabilities, or lack of experience and knowledge, unless they have been given supervision or instruction concerning use of the appliance by a person responsible for their safety.
6. Children should be supervised to ensure that they do not play with the appliance.

■ Electrical Safety and Fire Prevention

1. **GROUNDING INSTRUCTIONS** This appliance must be grounded. In the event of an electrical short circuit, grounding reduces the risk of electric shock by providing an escape wire for the grounding plug. The plug must be plugged into an outlet that is properly installed and grounded.  
**WARNING** Improper grounding can result in a risk of electric shock.  
Consult a qualified electrician if the grounding instructions are not completely understood, or if doubt exists as to whether the appliance is properly grounded.Do not use an extension cord. If appliance.



2. The range hood should be connected to a standard power socket with safe grounding. The midway connection, prolonged electric line or multi-socket wiring may cause electric shock, overheating and even fire. The wiring task should only be carried out by a professional electrician in accordance with current national or local electric safety regulations. Power off before wiring and make sure proper measures have been taken to avoid unexpected connection.
3. If the supply cord is damaged, it must be replaced by a special cord or assembly available from the manufacturer or its service agent.
4. All electrical parts including motor, switch and connector assembly, etc. should be strictly prevented from water. Never rinse your range hood directly with water or high-pressure steam. Never use the range hood when it is wetted to prevent electric shock.
5. Never touch the power plug, power switch or other electric parts with wet hand, otherwise, you may get an electric shock.
6. Never discharge the exhaust of range hood through the hot flue which is used to release waste smoke arising from coal and gas or other fuels.
7. When the cooking utensil catches fire, switch off the range hood immediately. Effective extinguishing measures must be taken at once, such as covering the open flame with metal cover, turning off the master gas valve and keeping flammable substance from the open flame etc.
8. Never use an open flame under the range hood. To avoid the danger of fire, do not cook or grill over an open flame under the range hood. When switched on, the range hood could draw flames into the filter. Fat particles drawn into the range hood present a fire hazard.
9. All exhaust pipes, flues and devices should be non-flammable. Never cover the range hood with flammable plastic film or paper.
10. The range hood should be fixed on the wall above the cook top. Keep a height of 25.6inch-29.5inch between the bottom of the range hood and the surface of the cook top. The working temperature for the range hood should not exceed 40°C.
11. When the appliance fixed, the plug should be accessible.
12. Do not dispose of electrical appliances as unsorted municipal waste, use separate collection facilities. Contact with your local government for information regarding the collection systems available. If electrical appliances are disposed of in landfills or dumps, hazardous substances can leak into the groundwater and get into the food chain, damaging your health and well-being. When replacing old appliances with new ones, the retailer is legally obligated to take back your old appliances for disposals at least free of charge.
13. There is a fire risk if cleaning is not carried out in accordance with the instructions.
14. TO REDUCE THE RISK OF FIRE, USE ONLY METAL DUCT WORK.
15. Failure to install the screws or fixing device in accordance with instruction may result in electrical hazards.
16. WARNING TO REDUCE THE RISK OF A RANGE TOP GREASE FIRE:
  - a) Never leave surface units unattended at high settings. Boilovers cause smoking and greasy spillovers that may ignite. Heat oils slowly on low or medium settings.
  - b) Always turn hood ON when cooking at high heat or when flambeing food (i.e. Crepes Suzette, Cherries Jubilee, Peppercorn Beef Flambe ☐).



- c) Clean ventilating fans frequently. Grease should not be allowed to accumulate on fan or filter.
- d) Use proper pan size. Always use cookware appropriate for the size of the surface element.
17. Accessible parts may become hot when used with cooking appliances.
18. WARNING-TO REDUCE THE RISK OF INJURY TO PERSONS IN THE EVENT OF A RANGE TOP GREASE FIRE, OBSERVE THE FOLLOWINGa:
  - a) SMOTHER FLAMES with a close-fitting lid, cookie sheet, or metal tray, then turn off the burner. BE CAREFUL TO PREVENT BURNS. If the flames do not go out immediately, EVACUATE AND CALL THE FIRE DEPARTMENT.
  - b) NEVER PICK UP A FLAMING PAN ☐ You may be burned.
  - c) DO NOT USE WATER, including wet dishcloths or towels a violent steam explosion will result.
  - d) Use an extinguisher ONLY if:
    - 1) You know you have a Class ABC extinguisher, and you already know how to operate it.
    - 2) The fire is small and contained in the area where it started.
    - 3) The fire department is being called.
    - 4) You can fight the fire with your back to an exit.

#### ■ Danger of Toxic Fumes

1. Great care should be taken when using the gas cook top which may cause carbon monoxide poison. Keep the room well ventilated.
2. If the range hood is under recycle mode, carbon filter must be installed.
3. When the range hood is under exhaust mode, make sure to install the damper along with the range hood.
4. Clean the metal filter and change carbon filter or particles according to actual condition.

#### ■ Suggestion and Description

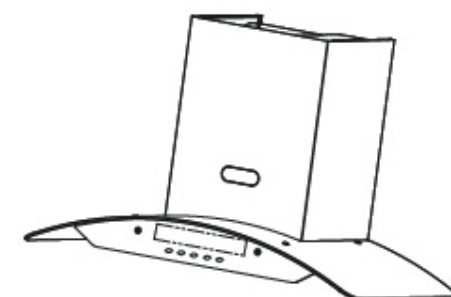

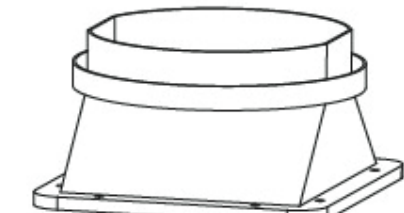
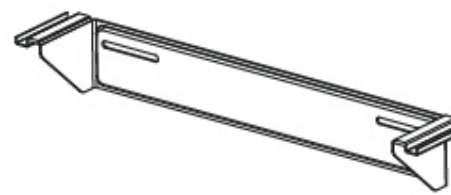



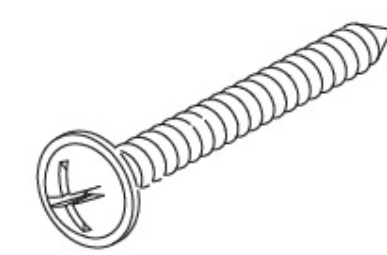
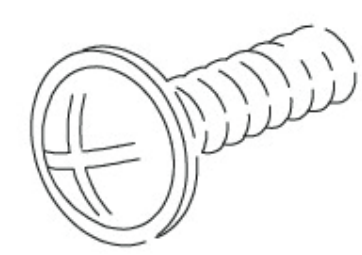
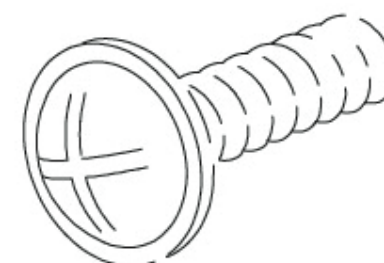
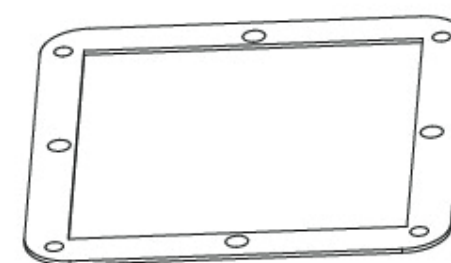
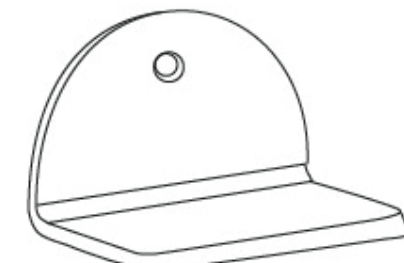

1. Warranty service is not provided base on the following situations:
  - 1) Failing to show invoice issued by authorized agents.
  - 2) Damages of the parts due to the abused and wrong installation, improper use, improper location, carelessness or other factors.
  - 3) Repair and maintenance without the permission of FOTILE authorized agents.
  - 4) Other situations that can't be controlled by FOTILE authorized agents.

In above case, FOTILE will be released from any responsibilities for the loss of personal property, personal injury directly or indirectly caused by the product.
2. Never expose the range hood when your kitchen is being decorated. The construction material, dust, lacquer, paintings as well as their released gases may corrupt the surface of the range hood and make it tarnished. Therefore, please install the range hood after decoration.
3. Please clean the surface of range hood with neutral detergent and soft cloth. Wring out the cloth when cleaning the switch and lamps.
4. Make sure to keep the appliance horizontally. Over long or more bends of exhaust pipe may impair air function, and more relative operation noise will occur.
5. In case any malfunctions occur, please power off the range hood at once, and call our authorized dealers or distributors for help.
6. This manual contains the information updated till the time when it is printed. We keen on technical innovation, we will reserve the rights to improve or modify the product and user's manual without any prior notices. Some of the illustrations in this manual are for reference purpose only, and subject to the actual products if there are any differences.



Package and Product Information

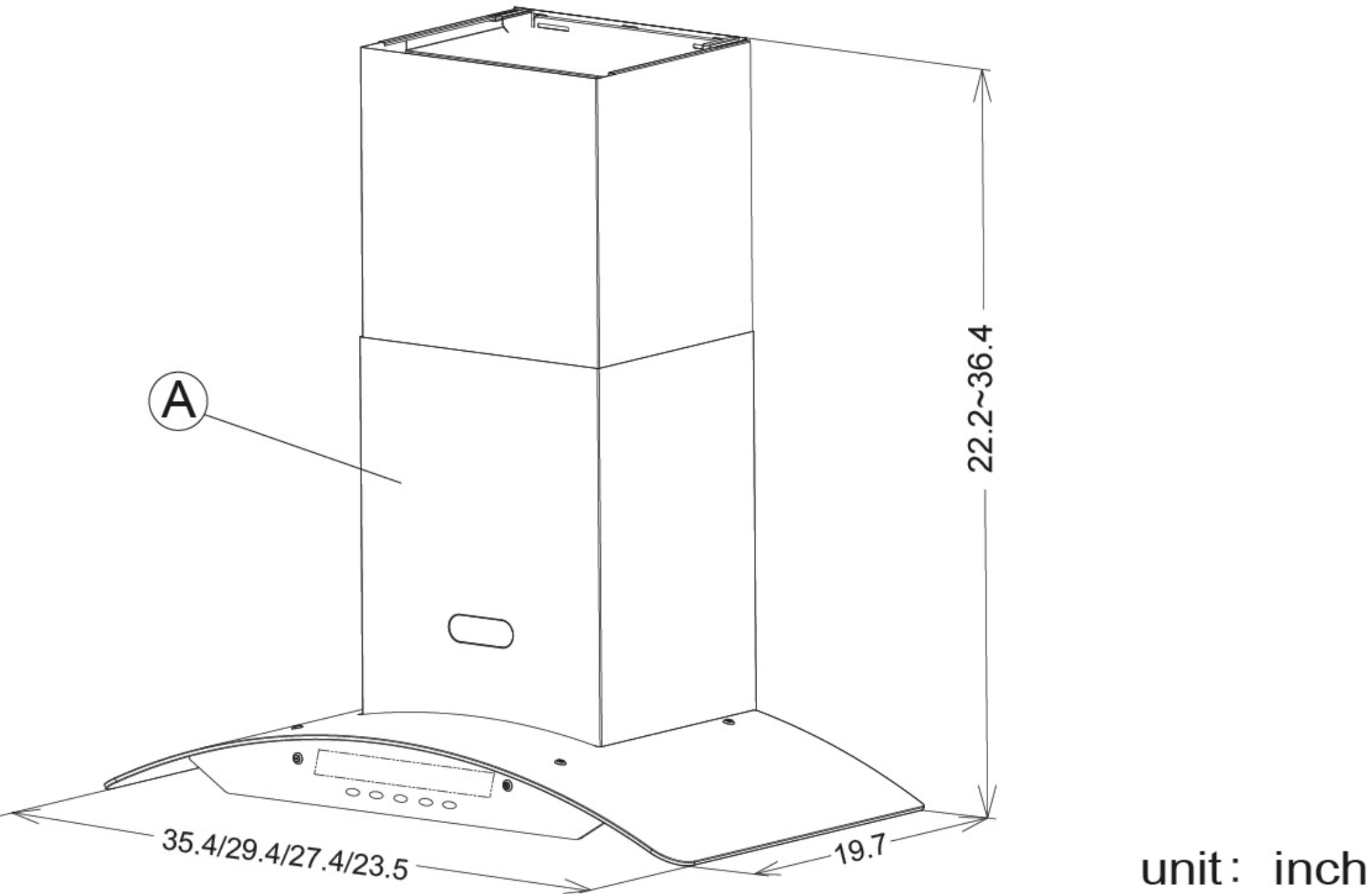
Packing List

		
Name:Main Frame Pack Qty: 1	Name: Pothook Qty: 1	Name: Exhaust Cover Qty: 1
		
Name:Decorative Cover Pothook Apply for Mode:Exhaust Qty: 1	Name:User's Manual Qty: 1	Name: Screw ST3.9×9.5 Qty:4
		
Name: Expansion Pipe φ10×60 Qty:7	Name: Screw ST4.5×60 Qty:7	Name:Screw ST2.9 × 19 Apply for Mode:Exhaust Qty:4
		
Name:Screw M4 × 18 Qty:8	Name:Seal Mat Qty: 1	Name:Safety Block Qty:1
		
Name:Oil Holder(Only for cone filter) Qty:1		

Performance Specifications

Model		EH11D/EH11D(30)/EH11D(24)	EH13/EH13(30)/EH13(24)
Voltage/Frequency		120V/60Hz	
Rated power input of the range hood		225W(light power included 15W×2)	200W(light power included 1.5W×2)
Noise	high setting	72dB(A)	
	low setting	66dB(A)	
Max static pressure		414Pa	
Caution:			
1. The dB(A) noise in the above table is tested in accordance with IEC60704 standard, which indicates the sound power level. Pressure level, to answer for: High setting 58 dB、low setting 52 dB.			
2. Such parameters as noise may have a deviation of less than 5%.			

Product Basic Conditions

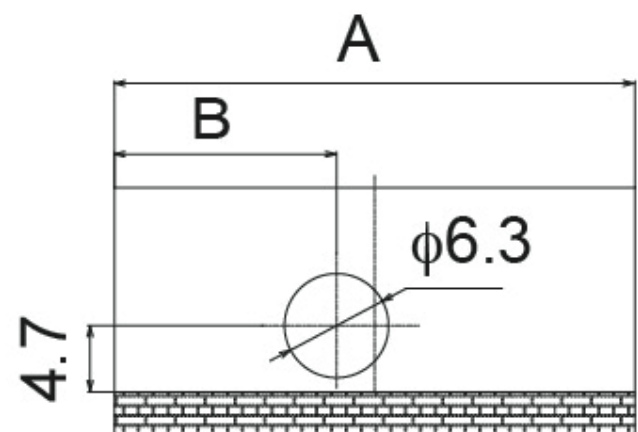


Installation

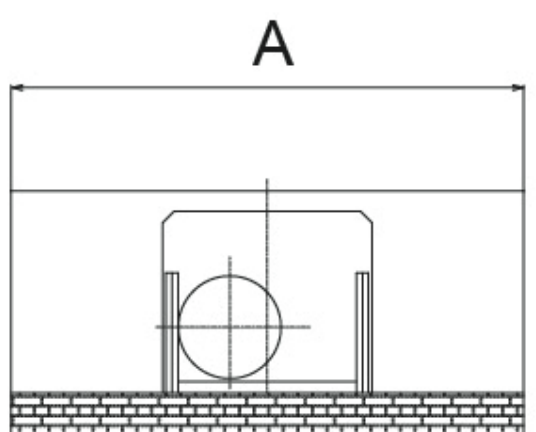
The standard assembled size of the culinary wall cupboard and range hood in the kitchen (unit:inch)

The dimension of the vent pipe hole from top :

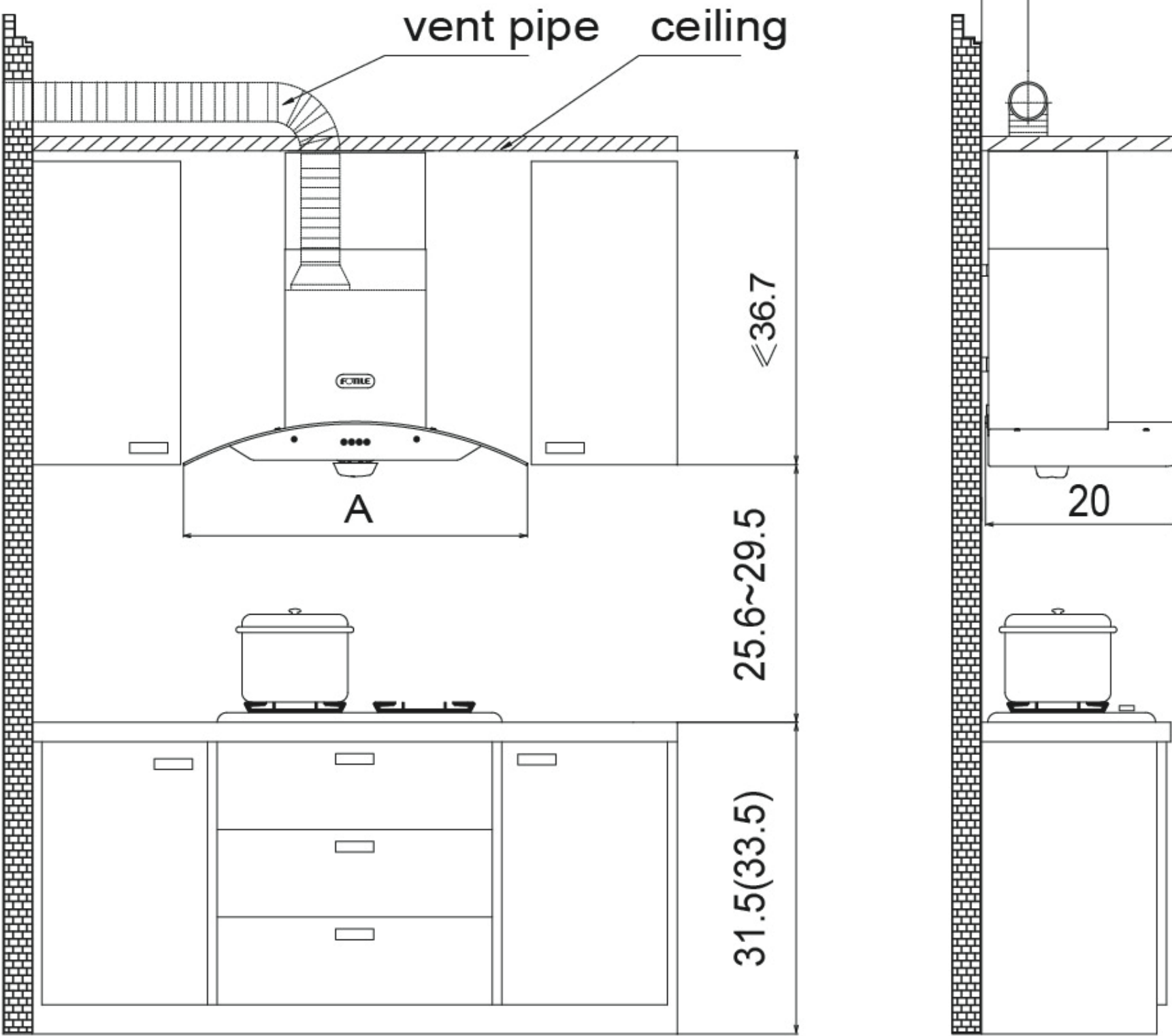
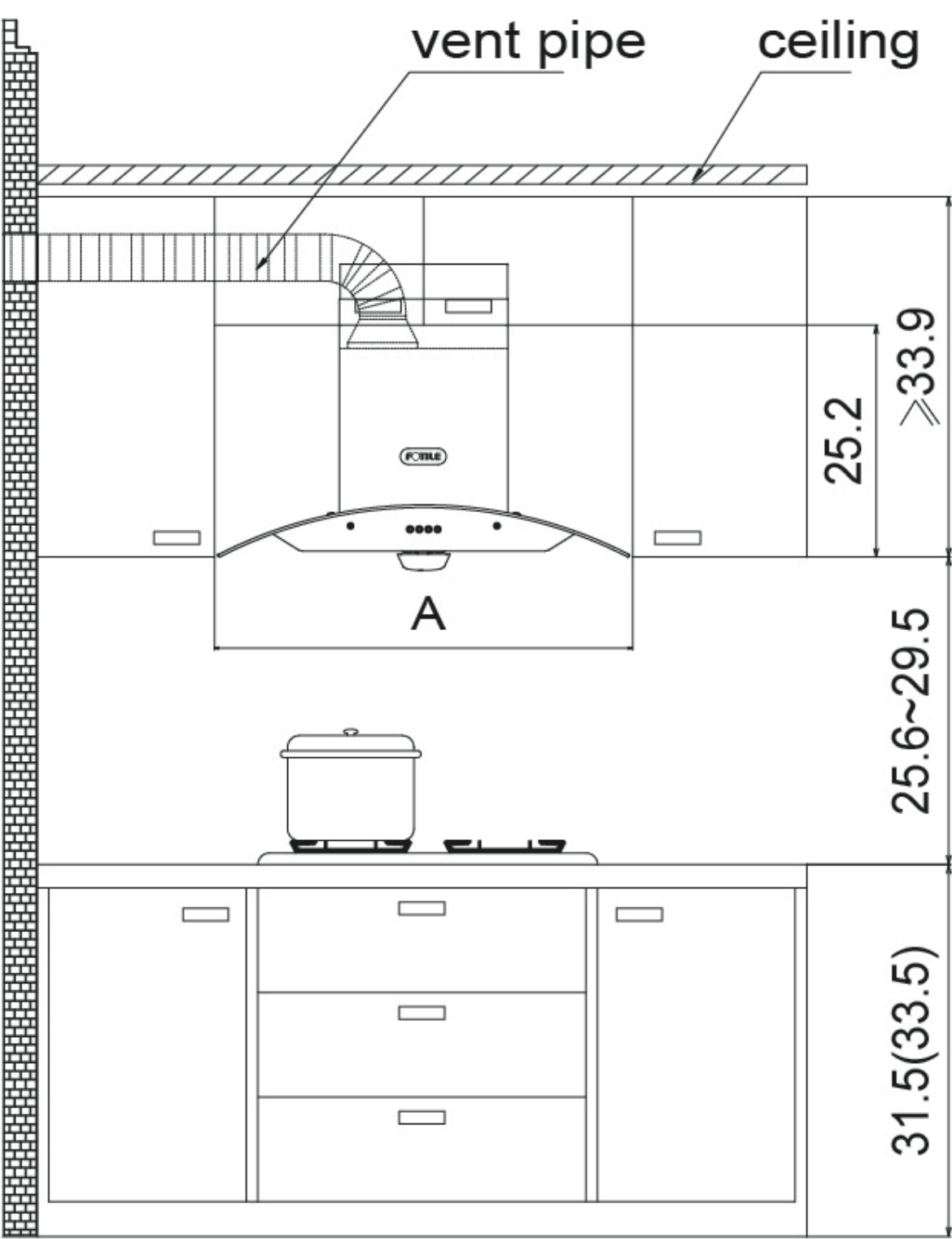
The fixing dimension of the decorative cover pothook form top :



Vent pipe in cupboard from the front :



Vent pipe in the ceiling from the front :

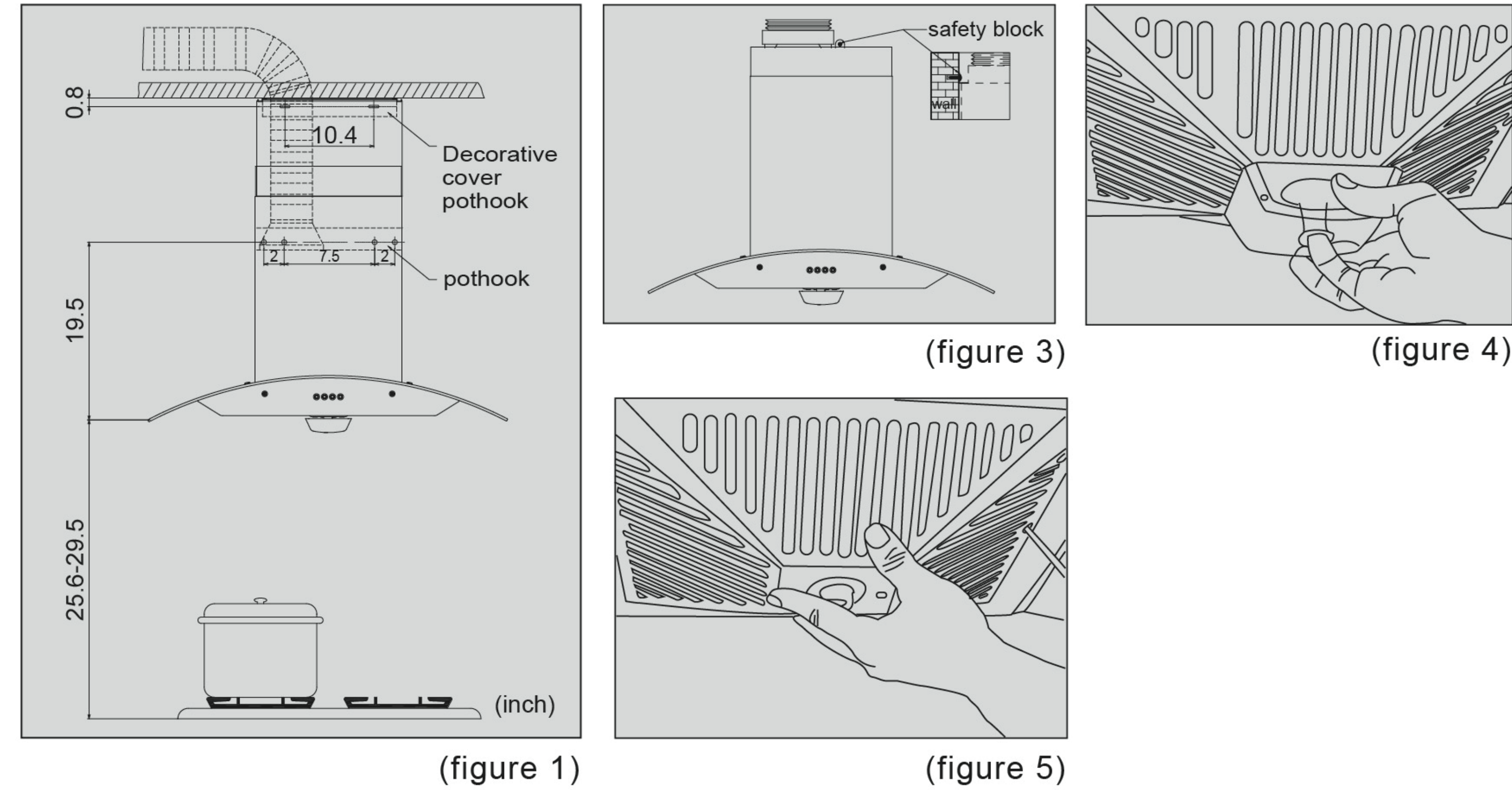


Remark: In the above picture, when A is 35.8, B is 15.2, when A is 30, B is 12, when A is 28, B is 11.4, when A is 24, B is 9.4.



■ Installation Steps

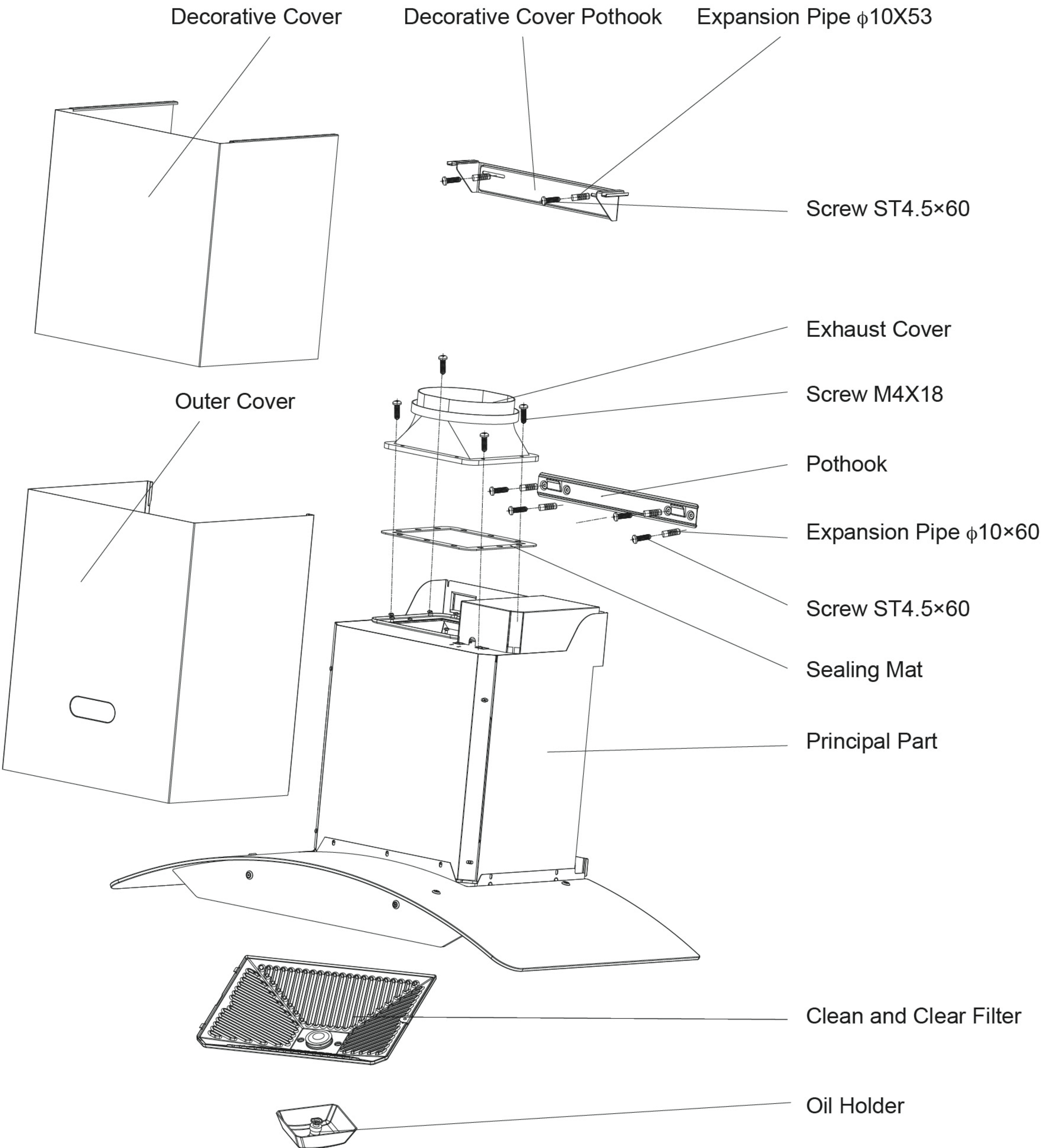
- 1. Prepare an electric drill with a  $\phi 10\text{mm}$  drill bit.
  - 2. According to (figures 1), confirm the position on the wall and drill a hole in which vent pipe is put. Fix decorative cover with decorative cover pothook, and then tighten the wood bolts.
  - 3. Use four self-tapping screws (ST3.9 $\times$ 9.5) to affix the exhaust-pipe to the exhaust cover.
  - 4. Use eight screws (M4X18) to attach the exhaust cover and seal mat to the top of the frame.
  - 5. Affix the frame. The frame should not be defective and meet the wall closely with a gap between the bottom and the wall.
  - 6. Install the exhaust-pipe according to (figures 1). The pipe must be straight with a smooth elbow and tight connection. The vane of the exhaust cover must have no resistance while it is opened and closed.
  - 7. Confirm the position on the wall and drill a hole according to (figure 2), and insert expansion pipe tightly, and then attach the safety block and affix it with wood bolt.
  - 8. Install the decorative cover :
    - 1)Put the decorative cover into the outer cover.
    - 2)Hold both of them together. Make the decorative cover matche the decorative cover pothook which is fixed on the wall push both of them onto the wall;
- (\*) 1. Choose the type of drill bit according to the material of the wall;  
2. Replace bulb: unscrew the screw in an anticlockwise motion and remove the bulb.



■ Installation Requirements

- 1. Fix the range hood to the roof or hood-mounting bracket, it must be kept about 25.6-29.5inch away from the cooktop.
  - 2. For air-exhaust, the vent pipe must be led out of the house or into the public flue, and the joint must be airproof; for air-recirculation, active carbon filter must be installed.
  - 3. To guarantee an effective exhaust system, vent pipe changing is not permitted.
  - 4. Ensure the power outlet is properly grounded.
- (\*) DO NOT vent exhaust air into hot flue that is used to vent smoke produced by coal or other fuels.

■ Install the Main Frame

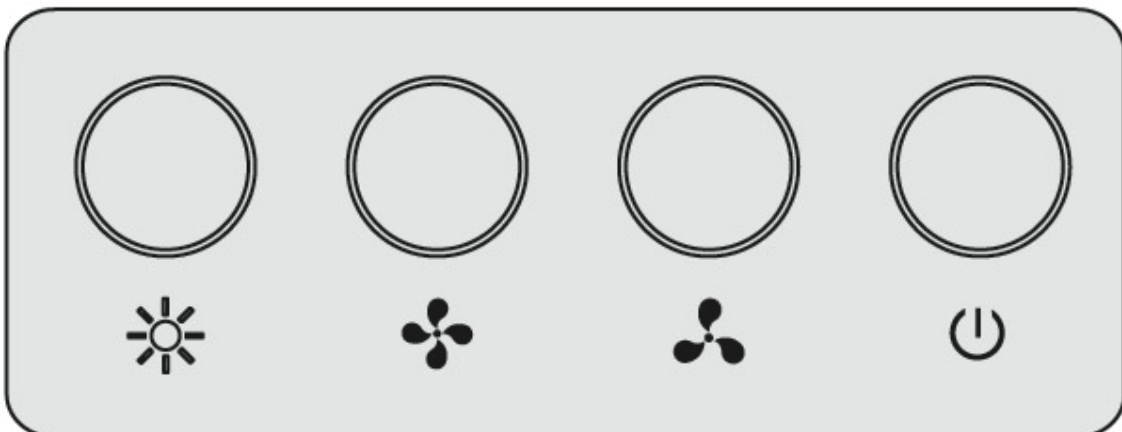


Operation

- 1. Install the oil holder according to figure 3.
- 2. Connect the plug to the electrical outlet.
- 3. Touch the Light button, and check whether the light works well or not.
- 4. Touch the Low Speed/Power/Mortor button and check whether the motor operates correctly.

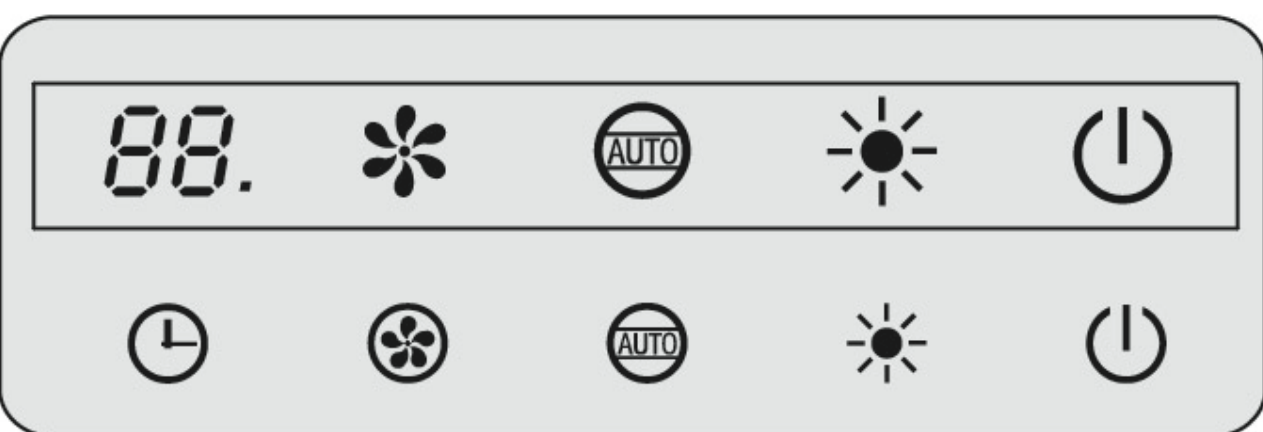


■ EH11D/EH11D(30)/EH11D(24)



- Light
- High Speed
- Low Speed
- Power

■ EH13/EH13(30)/EH13(24)



- Delay Time (2 min)
- Motor
- Auto
- Light
- Power

1. Touch the Motor button and check whether the motor operates correctly.  
Touch the button for one time, the motor will be working in high/low speed;  
Touch the button for two times, the motor will be working in middle speed;  
Touch the button for three times, the motor will be working in low/high speed;  
Touch the button for four times, the motor will be stopped;(Whichever is according to the actual product configuration)  
When the motor is working, Motor State Display will keep rolling.
2. Touch the Auto function button, the AUTO function will be working within two minutes.  
Touch the AUTO button again, the function will be stopped.  
The function is to check whether there is a big temperature change in the kitchen, or there is a combustible leaking gas in the kitchen. If the kitchen comes out above two situations, the range hood will turn on automatically.
3. Delay timer operating range is from 00 to 99min, please set the right time you needed. After 3 seconds setting, the function will be started up. The timer will count time from the number you set to 00, then the range hood will be turned off automatically. when the display turn to 00.
4. When the range hood is working, touch the power button, the range hood will be stopped. Touch the power button again, the range hood will waiting state, Power State Display will show bright blue color. If there is no any operation; the range hood will turn off automatically.
5. Clean Lock Function: If you touch the power button for 3 seconds, clean lock function will start. Power state display will be shining, and all the buttons will be locked. You should touch the power button for 3 seconds to stop clean lock function.

Cleaning and Maintenance

- Be sure power off the appliance before cleaning or maintenance. For example,
- ◇ Cut off power socket.
  - ◇ Pull the power plug out of the socket on the wall and move away the plug.
  - ◇ The stainless steel air inlet components may cut the hand. Please be careful when they are installed or torn down. It is suggested to wash the components in the dishwasher. During the whole process of washing, please wear gloves.

■ Metal Filter

Notes for Cleaning:

- 1.The metal filter can be used repeatedly. It should be frequently cleaned (at least once every three or four weeks) so that it may prevent the grease accumulation. Too much grease may cause fire.

- 2.When mounting or dismantling the metal filter step by step, make sure the filter is held by hand all the time, so that it will not fall off and break or damage the other items.
- 3.Immerse the filter into hot water, put proper detergent and wash it with a soft brush. Or put it into the dishwasher for cleaning.
- 4.Never use any hard or high-corrosive detergent to clean it; more attention should be paid to avoiding the deformation.

■ Replacing Notes

- 1.When it fails to remove the kitchen smell or has been used for more than six months, please replace the carbon filter or carbon particles.
- 2.When mounting or dismantling the metal filter, make sure the filter is held by hand all the time, that it will not fall off to break or damage the items.

■ Metal or Glass Surface

Use soft cotton cloth and neutral detergent for cleaning; it is strongly advised to use special cleaning detergent to protect the external surface of your appliance.

■ Switch

- 1.The electric elements and display elements of the switch tend to be corroded and fade under long-term oil environment and require more careful cleaning.
- 2.It should be cleaned with soft cloth and neutral detergent. The cloth should be wrung out before cleaning to prevent short circuit and corrosion of the switch lines.

■ Change the Light

Rotate the light cover to dismount it, pull out the lamp along its pointing direction. Mount on the new light in reverse direction.

■ Identification and Settlements of Common Problems

If you find abnormalities, please stop using and cut off the power supply, then check according to the following form:

Abnormal phenomena	Possible reason	Examine and repair method
When touch the button, the range hood and the lights don't work.	The power supply is not connected well.	Check whether it is well connect-ed with the socket.
		Check whether the socket is electrified.
The motor runs but the lights don't work.	The lights are damaged.	Change the lights by professionals.
	The lights and the lights holder aren't connected well.	Tweak the lamp tightly.
Mechanical shaking noise exists.	The bolt loosens.	Check whether the screws on the surface are loose.
Extraction strength is not powerful	Ventilation and convection are too strong.	Install the range hood lower.
	The distance between the hood and stove is too long.	Close some windows.
Too loud noise.	The vent pipe is transformative.	Reinstall the vent pipe.

- (\*) 1. Replace the lights; operated by professionals.
2. If the range hood can not work normally after all the above problems have been solved, please contact the service center.